

A Tribute to Kurt Weill

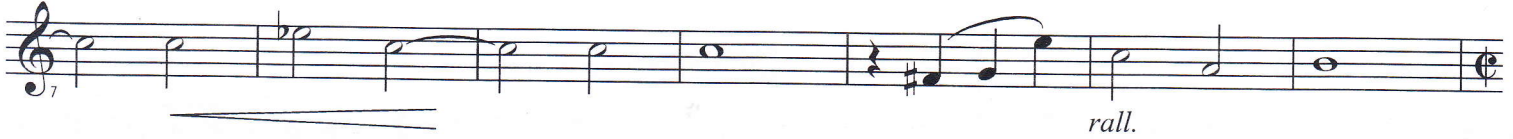
Featuring BILBAO SONG, THE SAGA OF JENNY, SEPTEMBER SONG and MACK THE KNIFE

B♭ TENOR SAXOPHONE

Kurt Weill

Arranged by Jerry Brubaker

Maestoso ♩ = 116



"Bilbao Song" - Music by KURT WEILL

14 Moderate swing ♩ = 80

Soli smoothly



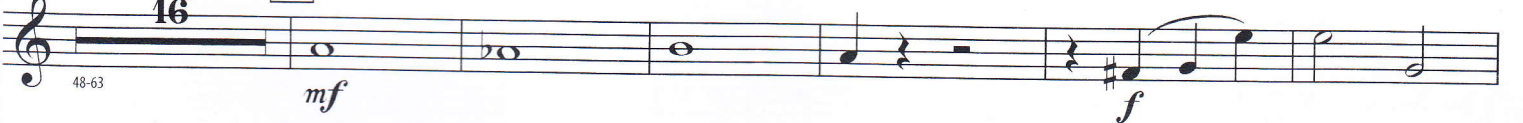
34



48

16

64



This Arrangement © 2008 KURT WEILL FOUNDATION FOR MUSIC INC., BERT BRECHT, THE ESTATE OF MARC BLITZSTEIN, CHAPPELL & CO., INC., IRA GERSHWIN MUSIC and TRO-HAMPSHIRE HOUSE PUBLISHING CORP.

All Rights Reserved including Public Performance



B♭ TENOR SAXOPHONE - 2

78 "The Saga of Jenny" - Music by KURT WEILL
Mysteriously ♩ = 96

78-88 **ff**

93 *p* *rall.*

99 Slower ♩ = 80 **mf** *rall.* *cresc.* **f** 107 Slow swing ♩ = 92

109 *mf* *cresc.*

114 **f** 119-120 *rall.*

121 "September Song" - Music by KURT WEILL
Lightly ♩ = 88 *p* *fp* 125-127 *mf* Rubato ♩ = 56 Rubato

129 Warmly ♩ = 100

135

141 **f** *cresc.* 145

147 *rit.* **ff** *mf* *a tempo*

B♭ TENOR SAXOPHONE - 3

153

Musical staff 153, starting with a treble clef and a key signature of one flat. The staff contains a melodic line with a crescendo hairpin and a dynamic marking of *f* *rall.*

161

"Mack the Knife" - Music by KURT WEILL
Swing ♩ = 88

Musical staff 161, starting with a treble clef and a key signature of one flat. The staff contains a rhythmic pattern with a dynamic marking of *mp*.

Musical staff 165, starting with a treble clef and a key signature of two sharps. The staff contains a rhythmic pattern.

Musical staff 171, starting with a treble clef and a key signature of two sharps. The staff contains a rhythmic pattern with a dynamic marking of *f*.

177

Musical staff 177, starting with a treble clef and a key signature of two flats. The staff contains a melodic line.

Musical staff 183, starting with a treble clef and a key signature of two flats. The staff contains a melodic line.

Musical staff 188, starting with a treble clef and a key signature of two flats. The staff contains a melodic line with triplets and a dynamic marking of *ff*. Measure 193 is boxed.

Musical staff 194, starting with a treble clef and a key signature of two flats. The staff contains a rhythmic pattern with a dynamic marking of *2*. Measure 197-198 is indicated.

Musical staff 201, starting with a treble clef and a key signature of two flats. The staff contains a rhythmic pattern with a dynamic marking of *4* and *2*. Measure 209-210 is boxed.

Musical staff 211, starting with a treble clef and a key signature of two flats. The staff contains a rhythmic pattern with a dynamic marking of *2* and triplets.