

Highlights From
LES MISERABLES

At The End Of The Day • I Dreamed A Dream • Master Of The House

On My Own • Do You Hear The People Sing?

Music by CLAUDE-MICHEL SCHÖNBERG

Lyrics by HERBERT KRETZMER

Original Text by ALAIN BOUBLIL and JEAN-MARC NATEL

Arranged by JOHNNIE VINSON

PERCUSSION 1

Snare Drum, Bass Drum, Ride Cymbal

Brightly 13 **15** Moderately Fast

S.D.
B.D. *mf*

19 "At The End Of The Day"

27

40 Ride Cym.

48

Around the set-----

59

rit.

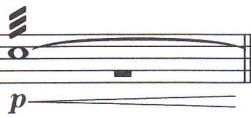
PERCUSSION 1

Slowly, With Feeling
3

69 "I Dreamed A Dream"
8

77

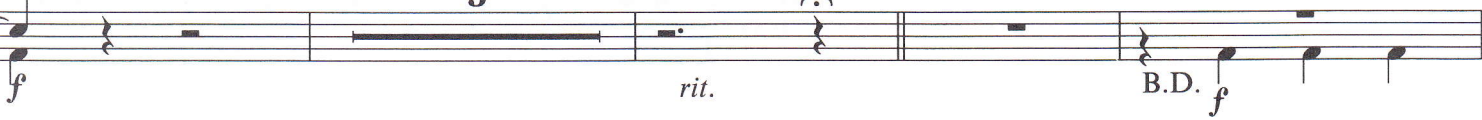
8



86 Grandiose

5

93 Moderately Fast



Stick on closed Hi-Hat

99 "Master Of The House"



4

8

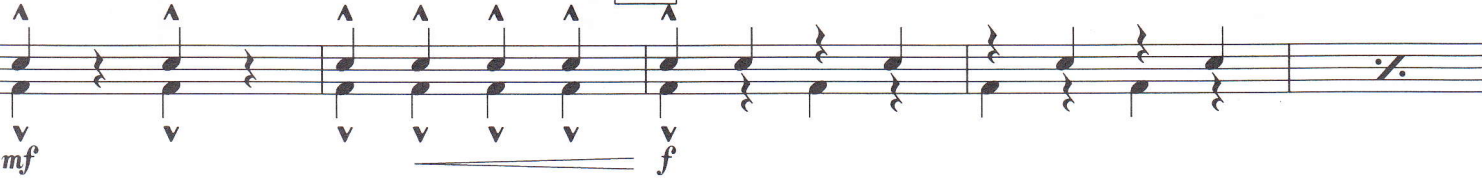
10



109 S.D.



117



125



131



PERCUSSION 1

Slowly

2

137 "On My Own"

5

Musical staff with rests and time signatures: 2/4, 3/4, 4/4.

145

Slightly Faster

On tightly closed Hi-Hat

Musical staff with Hi-Hat notation (x) and dynamics: p.

153 Tempo I, Broadly

4

Musical staff with dynamics: mf, p, poco rit., f.

161 Slow March

"Do You Hear The People Sing?"

Musical staff with time signatures: 2/4, 3/4, 4/4 and dynamics: rit., pp.

Musical staff with dynamics: p.

169

Musical staff with triplets and dynamics: mp.

175 Majestically

Musical staff with triplets and dynamics: cresc., f.

Musical staff with triplets and dynamics: cresc.

Musical staff with triplets, dynamics: rit., ff, and a fermata.